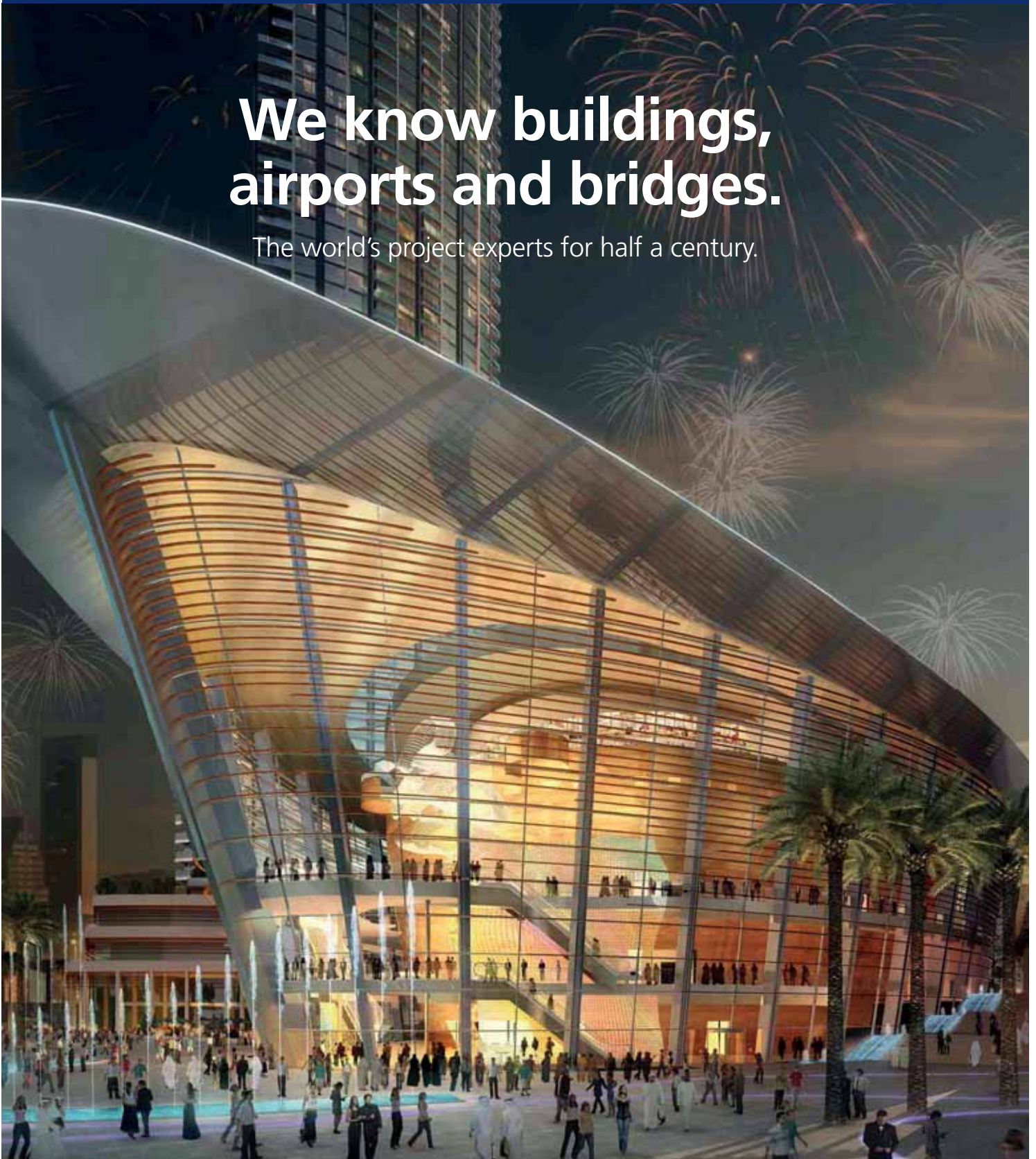




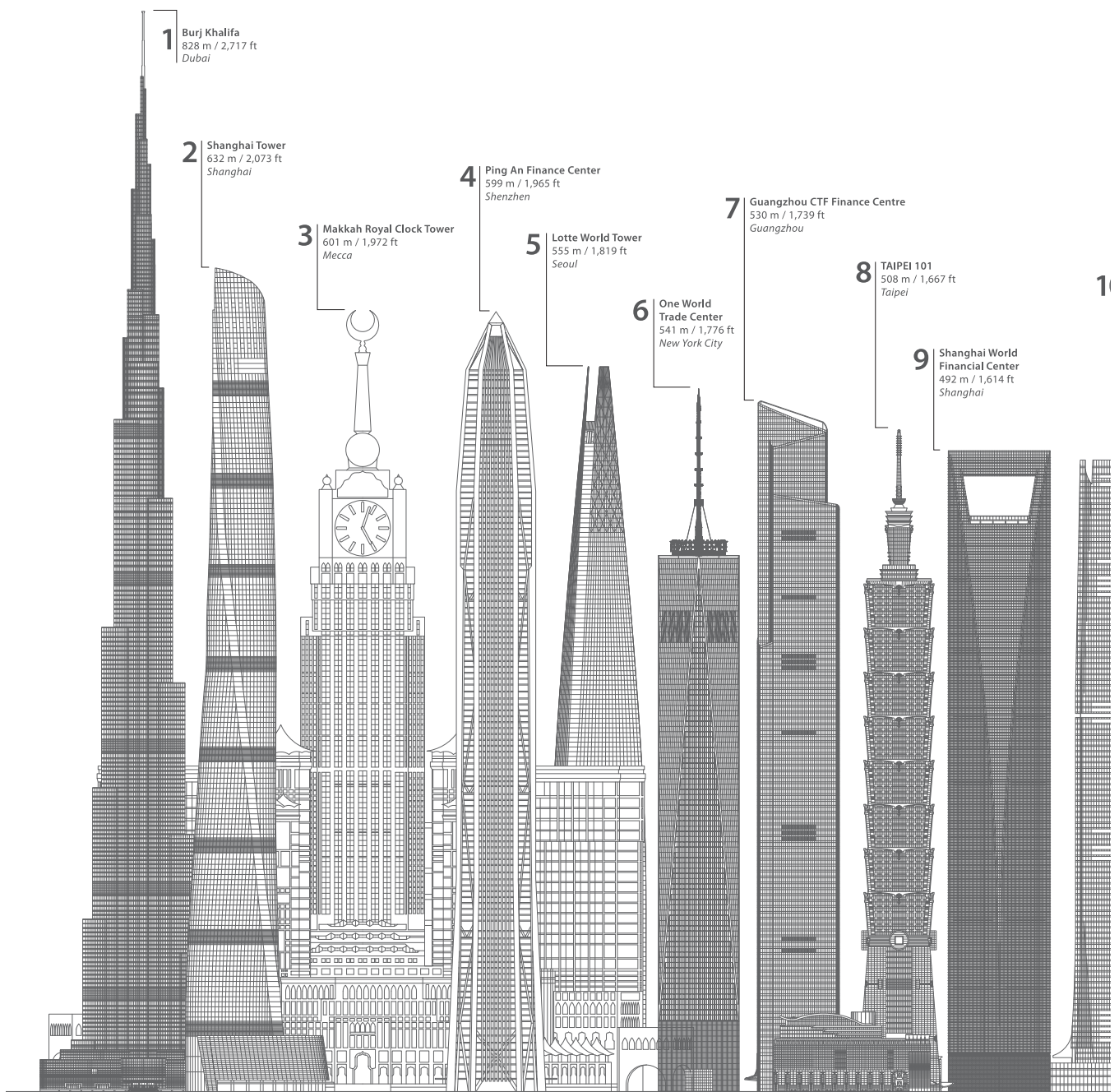
Jotun Protects Property

**We know buildings,  
airports and bridges.**

The world's project experts for half a century.



# Did you know that half of the world's tallest buildings are painted with Jotun?





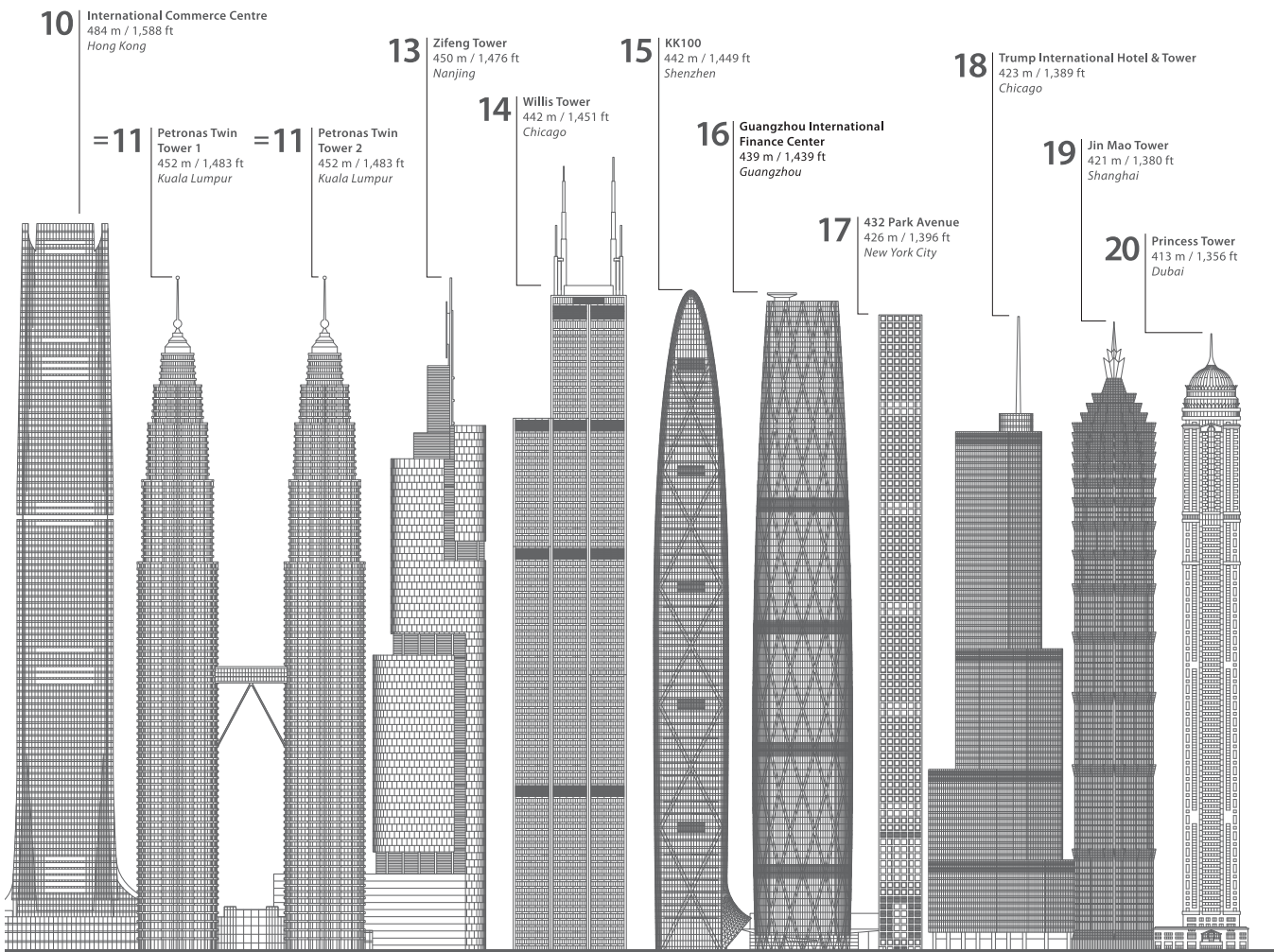
# High expectations. Met every time.

The world's best architects, designers, structural engineers and specifiers require a unique combination of product solutions, service and support. This ensures that the most demanding and complex new construction and maintenance projects of buildings, bridges and airports are delivered.

Jotun, as a single source solution provider, makes specifying easy; be it corrosion protection of steel, protection and decoration of architecturally exposed surfaces, intumescent coating fire protection of steel, protection and decoration of concrete floors, anti-carbonation of concrete or decoration of interior and exterior surfaces. We proudly offer Green Building Solutions – the market's easiest way to design, specify, beautify and protect sustainable buildings and SteelMaster – thin film reactive fire protection that brings out the beauty of your steel design.

Decades of experience in new construction and maintenance of buildings of all types, as well as bridges and airports, means that we know what customers need. That is why we have qualified technical expertise on all continents, offering solutions that meet the intrinsic demands and high expectations of the most complex building projects on the planet.

## That's why half of the world's tallest buildings are painted with Jotun.



PRODUCTS USED:

- **Penguard**
- **SteelMaster**
- **Hardtop**
- **Jotamastic**
- **Jotun Super Durable**
- **Jotafloor**

# Abu Dhabi International Airport

Abu Dhabi International Airport's Midfield Terminal Complex (MTC) is set to be the largest airport terminal under one roof, on the planet. The airport is spread over a vast area of 34,4 km<sup>2</sup>, and this development will dramatically increase passenger capacity to more than 30 million. Terminal spaces of this size have to withstand high temperatures in the event of fire, and with major traffic and high footfall, floor coverings and walls must be hard-wearing, hygienic and offer outstanding aesthetic appeal. For protective and powder coatings, to ensure the project was first-class right from the start, the specifiers turned to Jotun.







PRODUCTS USED:

- Penguard
- SteelMaster
- Hardtop
- Jotamastic
- Fenomastic
- Jotashield
- Jotun Super Durable

## Dubai Opera

Located in Downtown Dubai, billed as 'the most prestigious square kilometre in the world' Dubai Opera is a 2,000-seat multi-format performing arts centre. Any coatings chosen for the project had to meet the most stringent demands for high quality, and cover 45,000 m<sup>2</sup> of steel. Naturally, Jotun Protective Coatings and Decorative Paints for this unique building project were specified so the building would consistently hit the high notes.

PRODUCTS USED:

- Barrier
- Penguard

## Shenzhen Bao'an International Airport

After four years of construction and planning, the 451,000m<sup>2</sup> Terminal 3 expansion of Shenzhen Bao'an International Airport in southern China was opened in 2013. Hard-wearing properties, along with hygiene, were of extreme importance to the specifiers. As part of standard Quality Assurance practice, Jotun supported the client with coating inspection to promote and maintain quality control along with the supply of our high quality protective coatings for the impressive new terminal and cross walkway. The airport, with its 1,6km-long new terminal, has become a true landmark.



## Ping An Finance Center

Ping An Finance Center is an iconic 115-storey mega tall skyscraper in Shenzhen, China. Reaching 600 metres high, this striking building was commissioned by Ping An Insurance. It was completed in 2017, making it the world's fourth tallest building and the second tallest in China. Jotun was chosen as the single source provider due to our long track record of multi-divisional, complex projects. Jotun Protective Coatings and Powder Coatings were specified to protect the steel structure and façades. An ideal choice, confirmed by both the contractor and applicator, due to Jotun's consistent application properties under varying environments and construction conditions.

PRODUCTS USED:

- Barrier
- Penguard
- Jotun Super Durable
- Jotun Durasol







# Hardanger Bridge

Hardanger Bridge is the longest tunnel to tunnel suspension bridge in the world, connecting the east and west of the main highway in the southern part of Norway without the need for a ferry. The bridge is an impressive 1,380 metres long; the two concrete bridge towers protruding more than 200 metres into the sky. With greatly varying weather conditions and construction environments to consider, Jotun had the properties needed to perform across every aspect of this major infrastructure project.

---

## PRODUCTS USED:

- **Penguard**
- **Jotacote**
- **Hardtop**
- **Jota Armour**



PRODUCTS USED:

- Penguard
- Hardtop

# ICE Kraków Congress Centre

The ICE Kraków Congress Centre is the business and cultural hub of Kraków. Located in the heart of the city, it is home to a wide range of diverse events, from international congressional events, business conferences and symposiums to cultural events such as opera, theatre, concerts, ballet and social gatherings. The ICE Kraków Congress Centre covers 36,000m<sup>2</sup> across three main halls: The auditorium Hall (1,915 persons), The Theatre Hall (600 persons) and Chamber Hall (300 persons). Hard-wearing coatings were of paramount importance, so Jotun products were the ideal choice.





## White Magnolia Plaza

As a sign of the Bund Renaissance, White Magnolia Plaza stands on the side of Pujiang River in Shanghai, towering 320 metres, making it the number one skyscraper in the Puxi district. This imposing building and its steel structure demanded exceptional anti-corrosion solutions, ensuring 'bone health' of the new landmark in the North Bund. Jotun had the coating technology to make this happen.

### PRODUCTS USED:

- Barrier
- Penguard



## Hong Kong-Zhuhai-Macau Bridge

The bridge is a complex sea-crossing project. It consists of three cable-stayed bridges and one undersea tunnel spanning the Lingdingyang channel. The bridge connects Hong Kong with Macau and Zhuhai, three major cities on the Pearl River Delta in China. The 55-kilometre link is one of the world's longest. Hong Kong-Zhuhai-Macau Bridge is set to open to vehicular traffic in 2018 and has already become a landmark.

### PRODUCTS USED:

- Barrier
- Penguard
- Hardtop
- Jotamastic





## Our Tampines Hub

Inspired by residents, for residents, Our Tampines Hub is Singapore's first-ever integrated community and lifestyle hub that brings together a diverse range of services, programmes and facilities such as sports facilities, a library, community-based events and programmes, arts initiatives, a hawker centre and a range of retail facilities. Led by the People's Association and based on input from 15,000 local residents, Jotun helped in advising that the painting process of protective coatings be undertaken off-site, maximising productivity and minimising VOC emissions in residential areas. Working to a very tight schedule, the painting finished two months ahead of schedule. The project was awarded the Green Mark Platinum Award by the Building and Construction Authority (BCA) of Singapore in 2015. A testament to Jotun's levels of quality and service supporting our Green Building Solutions.

### PRODUCTS USED:

- Penguard
- Hardtop
- Jotashield
- Super Strax



## Bedok Integrated Complex

One of the largest integrated complexes in Singapore, Bedok Integrated Complex is a lifestyle hub for families and friends to come together and spend quality time under one roof. The complex comprising community club, Bedok sport centre, polyclinic, senior care centre and library. With high footfall in communal areas, as well as hygiene considerations for vulnerable age groups, coatings had to be intrinsically specified. Therefore, a single source solution provider was required. As the trusted coatings provider for the main contractor and applicator for many years, Jotun proved the perfect one-stop paint supplier to ease the planning and construction process, providing protective coatings to the steel structures, decorative paints to the building walls and ceilings and more.

### PRODUCTS USED:

- Penguard ■ Hardtop ■ Jotashield ■ Super Strax ■ Super Gardex

PRODUCTS USED:

- Barrier
- Penguard
- Hardtop

# Beijing Capital International Airport

Beijing Capital International Airport has become the busiest airport in Asia and the second busiest airport in the world. Terminal 3, after four years construction, became the largest airport terminal in Asia. In this iconic and heavy traffic transportation hub, Jotun's high performing protective coatings provide long-term colour and gloss retention, saving maintenance cost and contributing to outstanding appearance.







PRODUCTS USED:

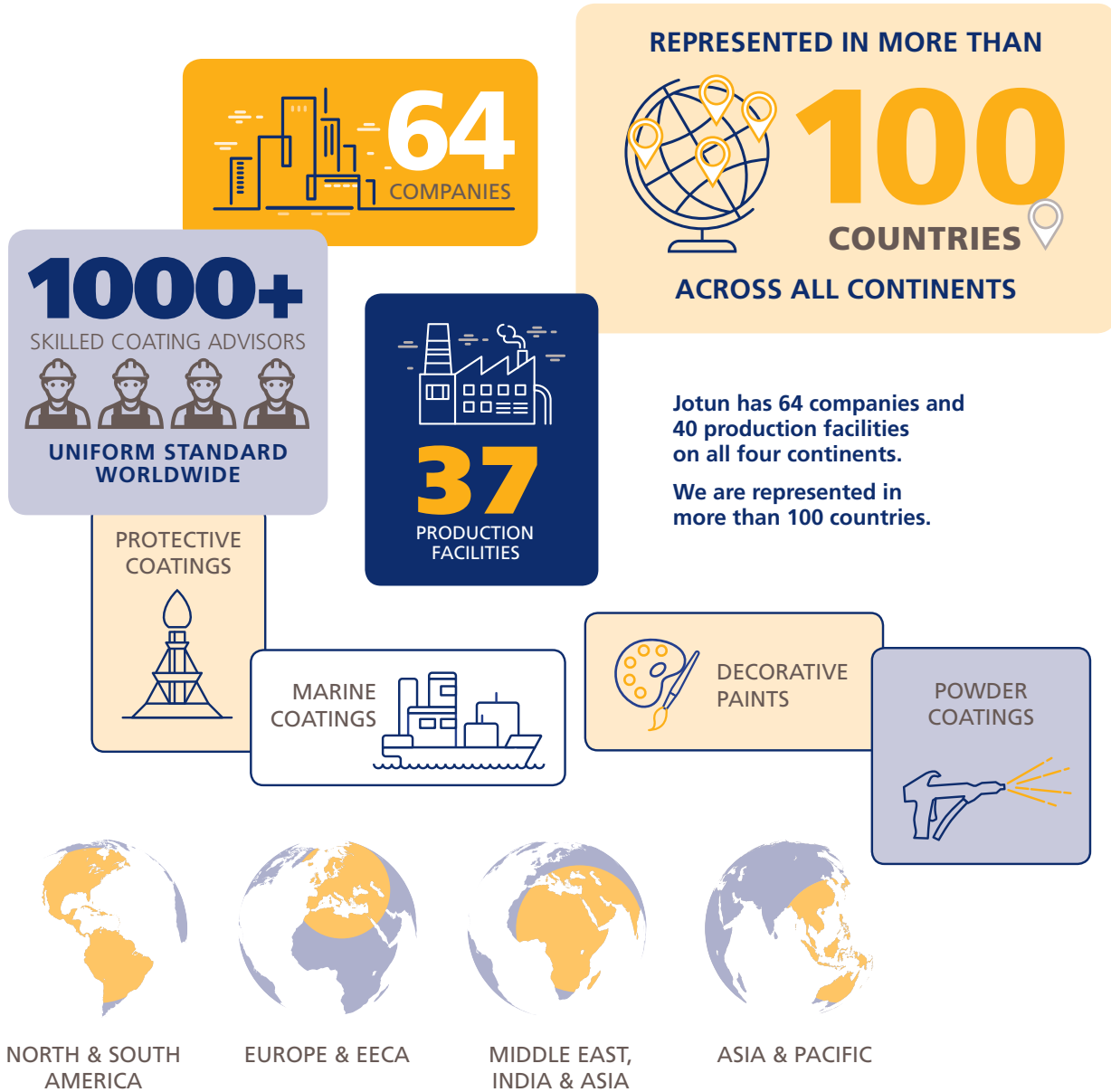
- Barrier
- Penguard
- Hardtop

## Hangzhou Olympic Sports Center

The Main Stadium at Qian Tang river front, opposite the city's new Central Business District, is an impressive project with a complex structure. Chosen to be the main venue of the 2022 Asian Games, the main stadium covers an area of 210,110m<sup>2</sup>. In addition to the 80,000-seat main stadium, the project also includes 10,000-seat tennis center, aquatic center, convention center, athletic facilities and retail. In the first construction phase alone, Jotun's Performance Coatings were meticulously specified for coating the 18,000 tons of steel in the main stadium. A big project, which called for a big name in coatings. Jotun.

# A global provider of coatings.

Jotun is one of the world's foremost manufacturers of paints, coatings and powder coatings.



## Jotun GreenSteps

Jotun recognises the responsibility we have to the environment and have established our own GreenSteps programme. This programme allows us to address market demand for producing coatings solutions that are more sustainable. After all, for a more colourful world, we all need to be a little greener.



## Green Building Solutions

Jotun's Green Building Solutions provide specifiers, architects, and building owners worldwide with approved systems ranging from decorative paints and architectural powder coatings to fireproofing and protective coatings that are independently tested and deemed as compliant to the most stringent green building certification standards, including LEED and BREEAM.





Eiffel Tower: maintained with Jotun for the last decade.

 60 tons of paint

 1,500 brushes

 324 metres in height

 25 painters

Jotun A/S  
P.O. Box 2021  
N-3202 Sandefjord, Norway  
Tel: +47 33 45 70 00  
[jotun.com](http://jotun.com)

